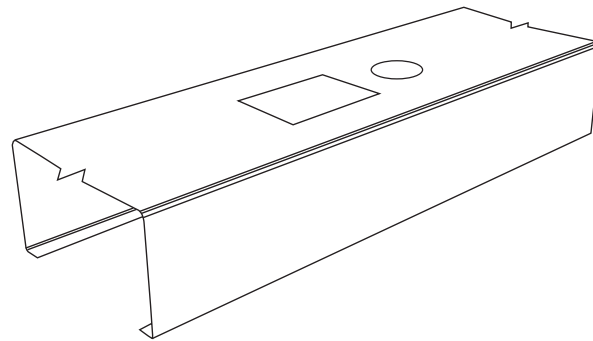
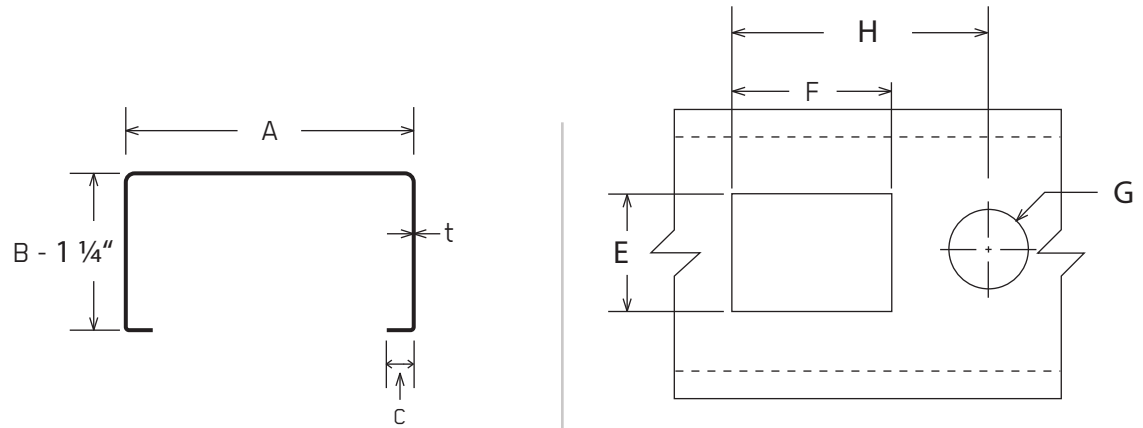




STUD

# SPECIFICATION SHEET



Stud in compliance with standards;  
CAN/CSA S136-12 / ASTM A653-11 / AISI S201-12

### Legend:

- A = Web (in)
- B = Flange (in)
- C = Lip (in)
- t = Minimum thickness of steel design coating not included (in)

### CSSBI NOMENCLATURE (AISI - S201-12)

- Example: 362S125-33  
 362 A: 3-5/8 = 3.625  
 S Stud type: S = Stud T = Track  
 125 B: 1-1/4 = 1.250  
 33 t: 33 = 33 mills

Quebec  
 418-871-8088  
 800-871-5818  
 Boucherville  
 450-655-5100



# STUD

## CONFIGURATIONS

A* (in)	B* (in)	t (mils)	C (in)	E** (in)	F (in)	G (in)	H (in)
1-5/8(162)	1-1/4 (125)	33	3/16	3/4	2	3/4	3
2-1/2 (250)	1-1/4 (125)	33-43	3/16	3/4	2	3/4	3
3-5/8 (362)	1-1/4 (125)	33-43-543/16		1-1/2	2	1-3/8	3-1/4
	1-5/8 (162)	33-43-54-68-97	1/2	1-1/2	2	1-3/8	3-1/4
6 (600)	1-1/4 (125)	33-43-543/16		1-1/2	2	1-3/8	3-1/4
	1-5/8 (162)	33-43-54-68-97	1/2	1-1/2	2	1-3/8	3-1/4
8 (800)	1-5/8 (162)	33-43-54-68-97	1/2	1-1/2	2	1-3/8	3-1/4

\*other dimensions on request

\*\*AISI S201-12 : Maximum 50% of "A"

## THICKNESS

For table calculations, the standard S136-12 prescribes the thickness of the material used.

Nominal:	Thickness used - steel without protective coating for table calculations
Minimum (t):	Minimum steel thickness allowed without protective coating (95% of design)
Coating:	Protective coating applied to the steel. G40 = 0.40 oz / ft <sup>2</sup> G60 = 0.60 oz / ft <sup>2</sup> 1 oz / sq. ft. estimated .00168 in. total both sides (standard A653 8.1.3-11)
Measured:	Minimum measured thickness of a stud with protective coating (final product)

min (mils)	nominal t (in)	minimum (95% nominal)	G	minimum coating oz/ft <sup>2</sup>	(in)	Measured (in)	Grade ksi
33	0.0346	0.0329	60	0.60	0.00101	0.0339	33
43	0.0451	0.0428	60	0.60	0.00101	0.0439	33
54	0.0566	0.0538	60	0.60	0.00101	0.0548	50
68	0.0713	0.0677	60	0.60	0.00101	0.0687	50
97	0.1017	0.0966	60	0.60	0.00101	0.0976	50

CAN/CSA S136-12 : North American Specification for the Design of Cold-Formed Steel Structural Members

ASTM A653-11 : Standard Specification for Steel Sheet, Zinc-Coated (Galvanized) or Zinc-Iron Alloy-Coated (Galvanealed) by Hot Dip Process

AISI S201-12 : North American Standard for Cold-Formed Steel Framing



# MANUGYPSE

Quebec 418-871-8088 • 800-871-5818

Boucherville 450-655-5100

Nov. 2017